



THE CENTER FOR WOODEN BOATS
CAPITAL CAMPAIGN
LAUNCH A LEGACY





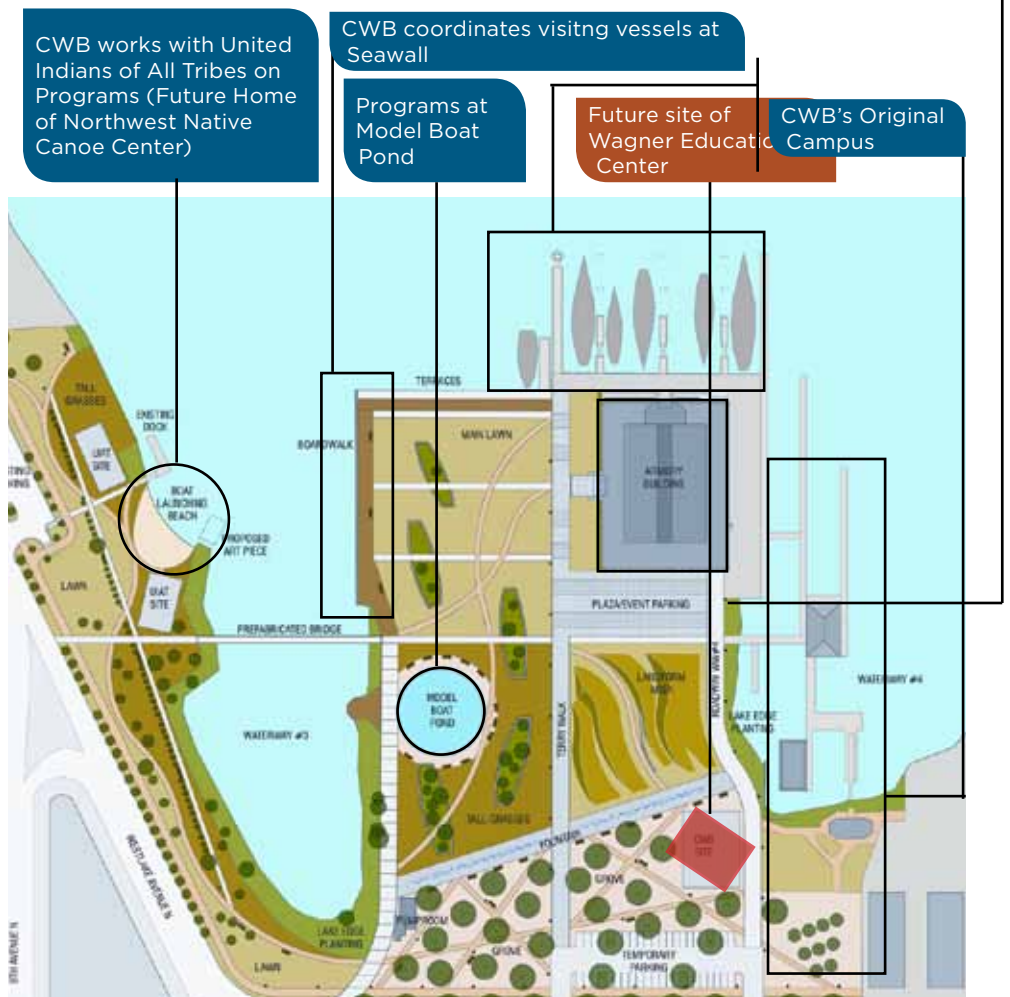
DEAN FORBES

THE NEED IN SOUTH LAKE UNION

- Rapid growth in demand for programs (growth in South Lake Union, MOHAI open next door)
- Loss of 10,000 square feet of former classroom and office space in the Naval Reserve and outdoor buildings in the park
- Facing daily tradeoffs between programs due to limited in-door program space
- Turning away youth programs due to lack of indoor classrooms and shop space
- CWB's programs have grown throughout Lake Union Park. CWB leads the Working Group of non-profits who together activate the space for visitors. The new Education Center will serve as a vital hub.

CWB partnering with MOHAI on field trips and events.

CWB partners with historic ships on programs and events and coordinates visiting historic ships at the wharf.



NEW EDUCATION CENTER BUILDS ON TRADITION



WITH A MODERN SENSIBILITY





STEPHANIE BOWER

THE BOATSHOP IS AT THE HEART OF CWB





NEW: MORE THAN DOUBLES SHOP SPACE





YOUTH ARE OUR FUTURE

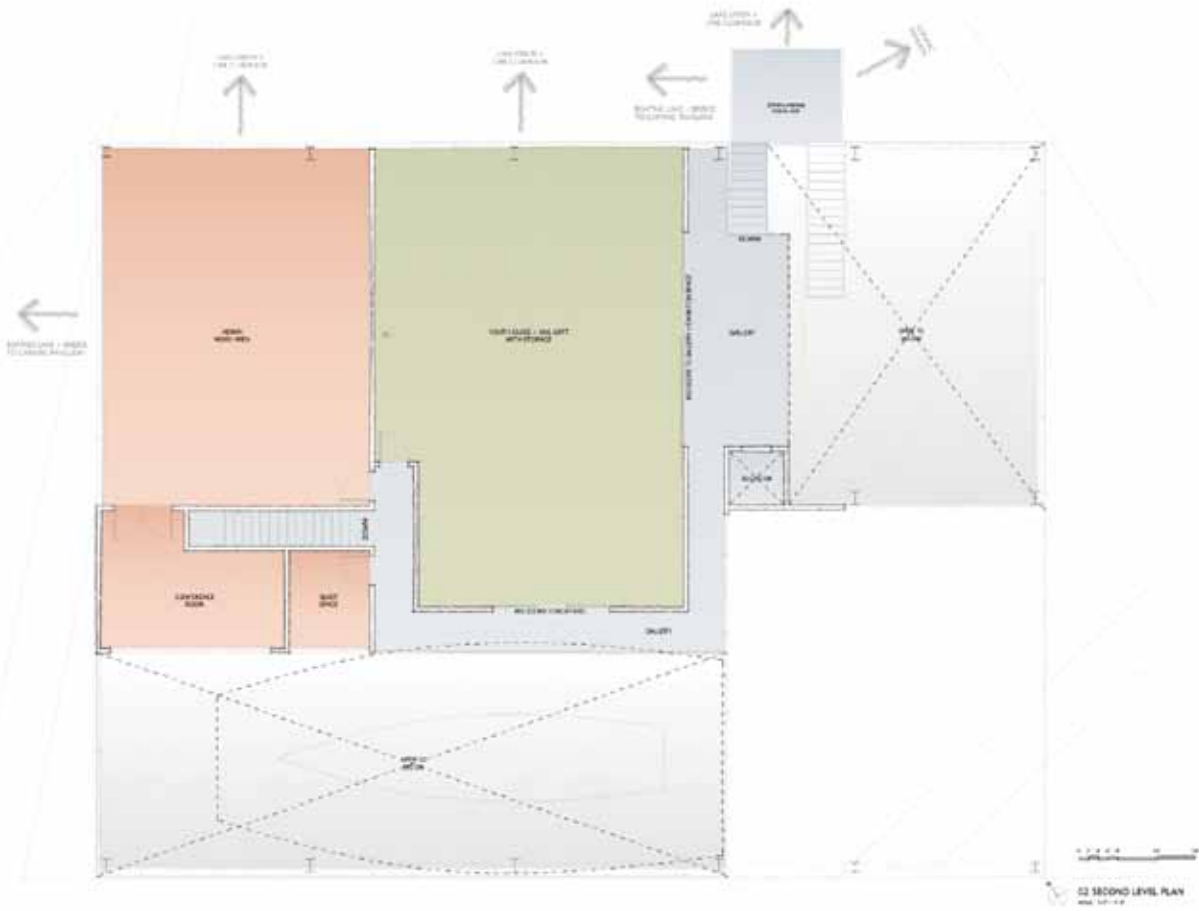




NEW: DEDICATED YOUTH CLASSROOM



PLANS FOR THE NEW EDUCATION CENTER.

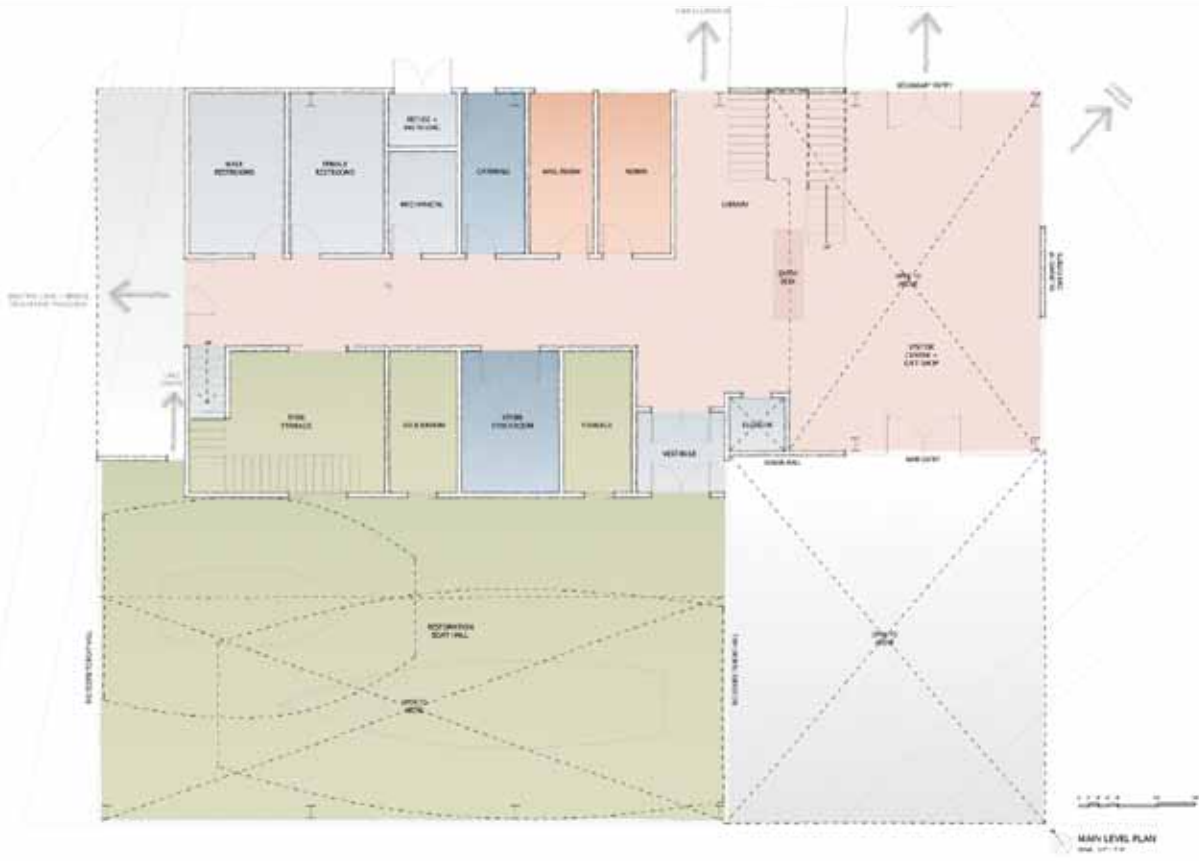


OLSON KUNDIG ARCHITECTS
 ARCHITECTS
 CENTER FOR WOODCOCK BOATS
 100 W. 1ST STREET, SUITE 100
 PORTLAND, ME 04101

DATE: 02-10-2011
 SCALE: 1/8" = 1'-0"
 SHEET: A2.20
 PROJECT: CENTER FOR WOODCOCK BOATS
 DRAWING: SECOND FLOOR PLAN
 02-10-2011

SECOND LEVEL PLAN
A2.20

SECOND FLOOR



OLSON KUNDIG ARCHITECTS
 ARCHITECTS
 CENTER FOR WOODCOCK BOATS
 100 W. 1ST STREET, SUITE 100
 PORTLAND, ME 04101

DATE: 02-10-2011
 SCALE: 1/8" = 1'-0"
 SHEET: A2.10
 PROJECT: CENTER FOR WOODCOCK BOATS
 DRAWING: MAIN LEVEL PLAN
 02-10-2011

MAIN LEVEL PLAN
A2.10

FIRST FLOOR